

# SUSTAINABILITY AND HUMANIZATION IN A REHABILITATION HEALTH CARE CENTER BUENOS AIRES METROPOLITAN AREA (AMBA) - ARGENTINA

## PROJECT INFORMATION

The building, now under construction, was designed to house a **rehabilitation center for patients with motor and/or cognitive disabilities** in addition to an **inpatient sector for palliative care**. It will have a total of 140 beds. Without losing the objective that the building serves the purpose for which it was created, the general premise of this project was to develop a sustainable and humanized building.



## GENERAL STRATEGIES CARRIED OUT

- minimize the environmental footprint keeping in mind the local environment
- efficient land use integrating it into the natural landscape
- not to cause major impacts on the environment that can affect the temperature and to avoid the formation of a "heat island" effect
- roofs covered with green and stones that can absorb and/or reflect sunlight protecting the building and the environment, and slow down rainwater drainage
- deep eaves to mitigate the entry of summer sunlight which can be very hot
- reduce energy and water consumption throughout building life span
- use of renewable energies to complement conventional services
- architecture should collaborate in patient recovery by creating sustainable environmental strategies, giving all the spaces where the patient stays or moves, natural lighting and visuals to the outside green.

## THE SITE

With **30,517.73 square meters** area, it is located in a suburban area of the **Metropolitan Area of Buenos Aires City**. With many and varied trees, some of greater size and importance are located towards the front and some smaller or bush varieties are located on its limits, sides and back. This distribution of green allows us to project and **construct the building without practically eliminating any tree**.

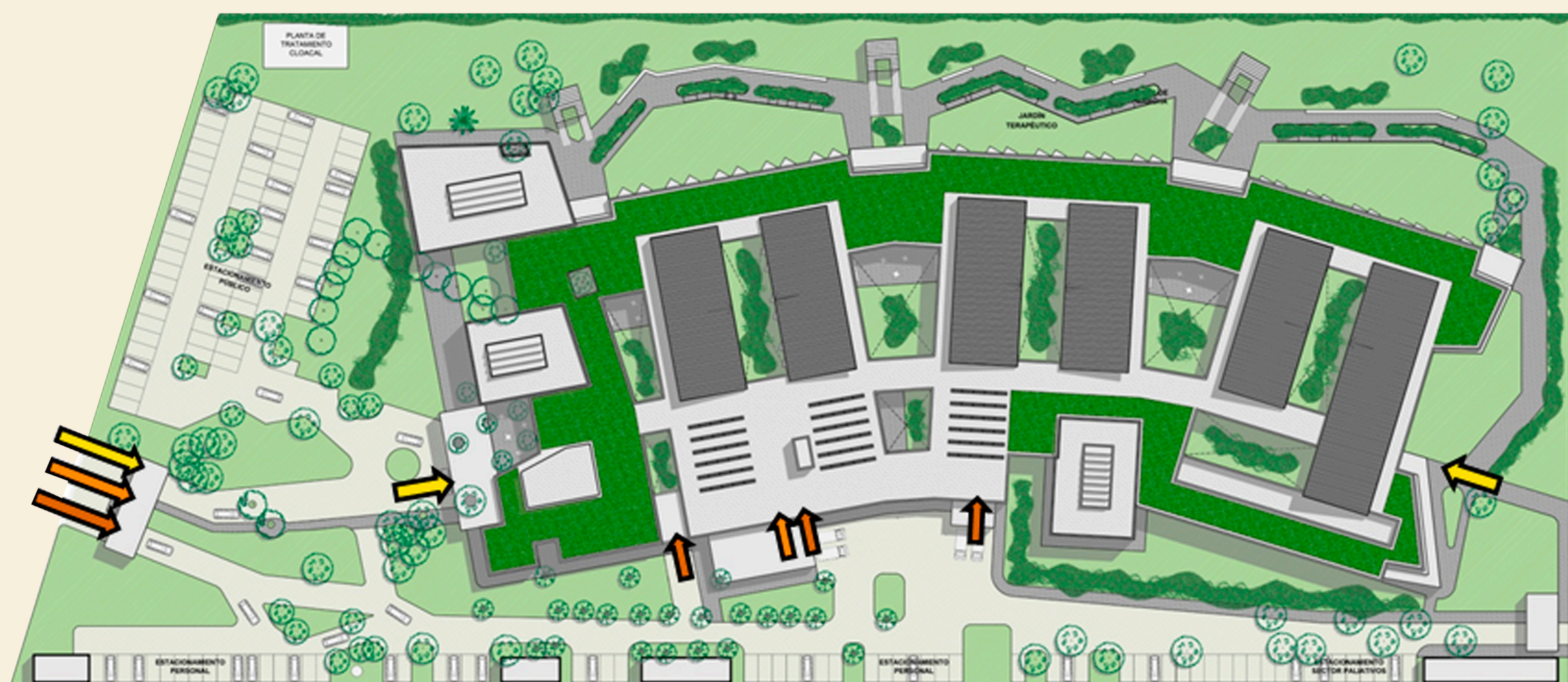


## IMPLANTATION

In line with the mentioned general premise of developing a project with sustainability criteria we have implanted the Center within 75% of the lot with no pre-existing trees. The existing and added trees have been incorporated into the design of facilities with landscape and bio-environmental criteria related to thermal and visual control.

## VOLUMETRY

With the idea of **minimizing its environmental footprint and integrating it to the environment**, the building was developed with a volumetry having no negative impact on the environment.



## FUNCTIONAL ORGANIZATION AND CIRCULATORY SYSTEM

The Center is made up of Inpatient Units with a total of **140 beds**, plus the care areas, support and comfort spaces, both for the patient and staff and for general services. The building is based on a **mixed horizontal main circulation for patients, staff and visitors, and another exclusive technical area** that links the support facilities.



## PHOTOS



## LAYOUT



**INPATIENT UNIT**  
11 Rooms with 20 Beds  
Living Area  
Dining Area  
Occupational Therapy Area  
Resting Patio  
Resting Veranda



**TREATMENT SPACES 1**  
Gymnasium 1  
Occupational Therapy 1  
Therapeutic Pool



**TREATMENT SPACES 2**  
Gymnasium 2  
Occupational Therapy 2



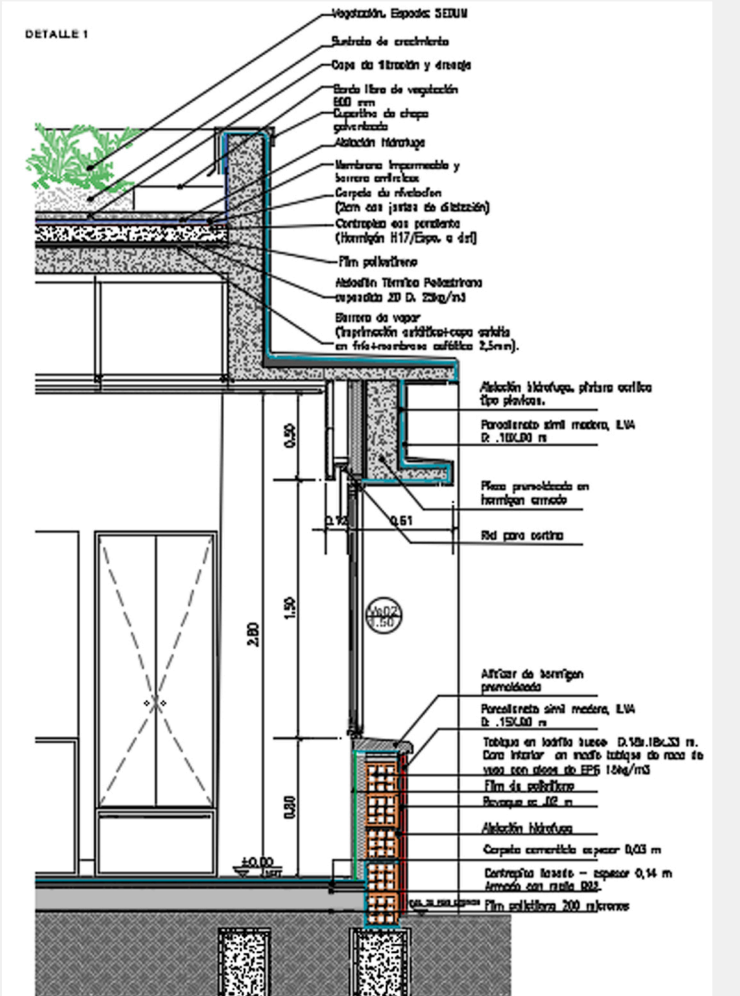
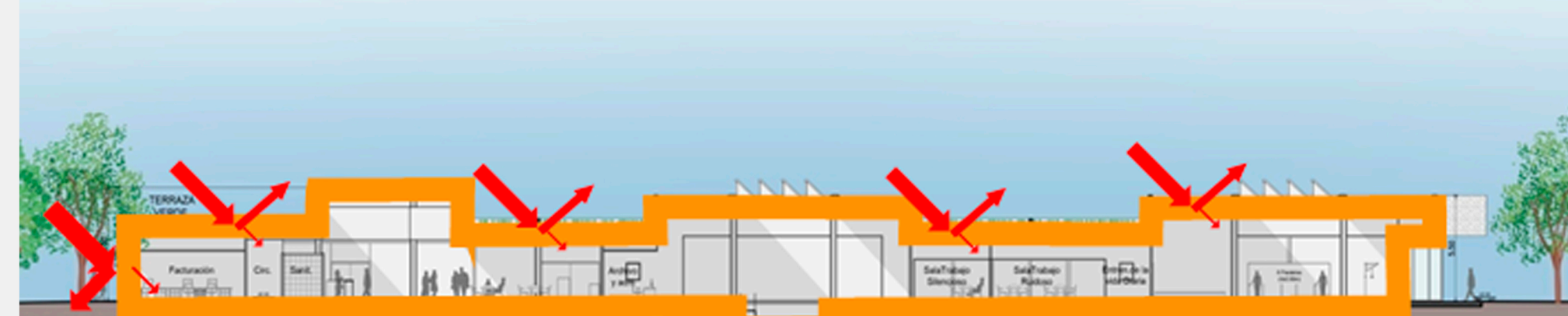
**TREATMENT SPACES 3**  
Therapeutic Garden

## SUSTAINABILITY MATERIALITY

Winter



Summer



## NATURAL LIGHTING



## HVAC FACILITIES

Geothermal Wells  
Distribution Plant



## LANDSCAPING

